



Facility Master Plan

Community Forum #1

March 27, 2017

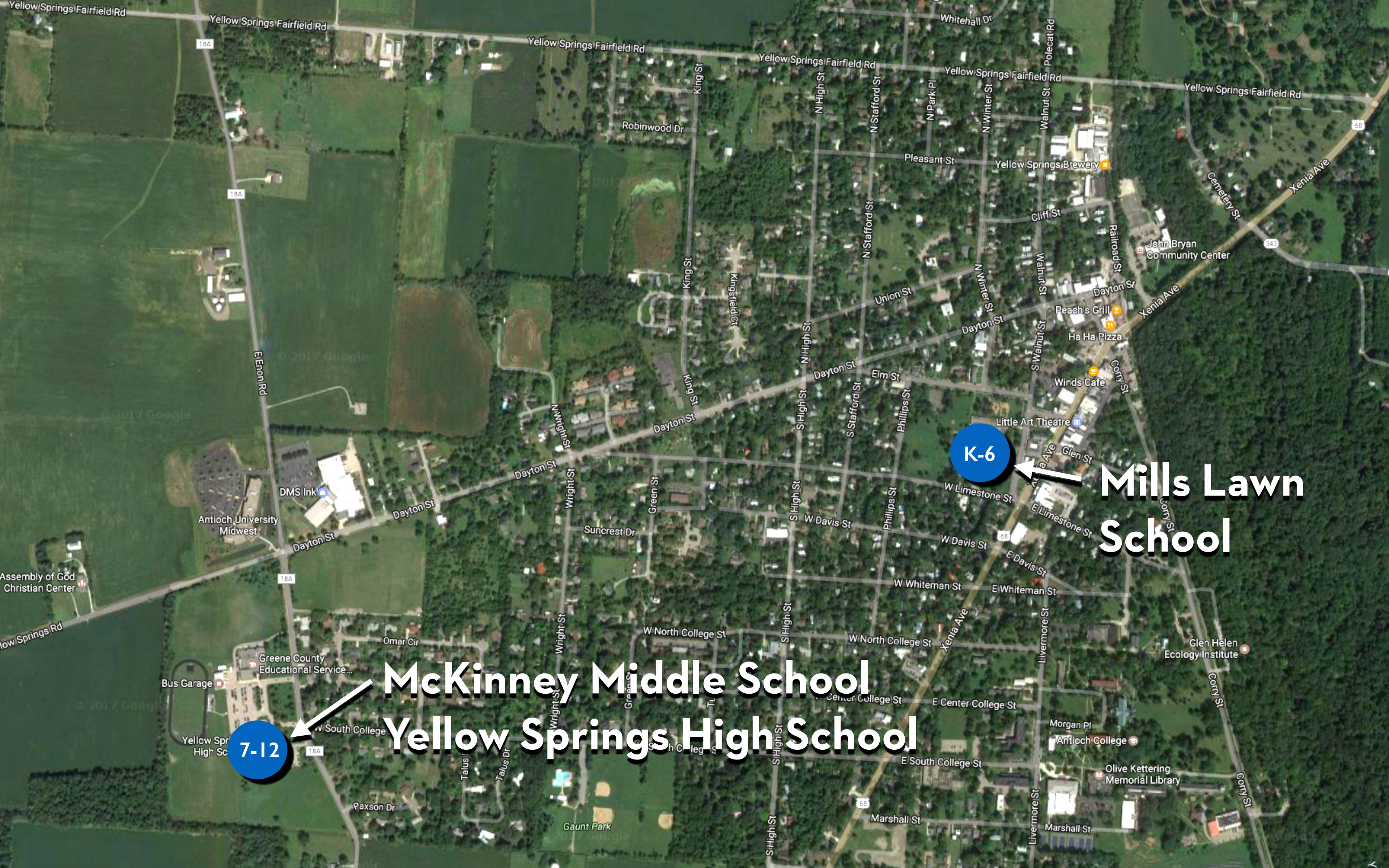
Agenda

- Why a Facilities Master Plan?
- Intro to OFCC (ELPP)
- Locally Funded Community Initiatives
- Six Concept Master Plan Options
- Conceptual Budget Range
- Schedule
- Next Steps
- Questions

Ohio Facilities Construction Commission (OFCC)

- Yellow Springs 506 / 614 Ohio Districts
- Expedited Local Partnership Program (ELPP)
- Credit at CFAP
- 83% Local Share - 17% State Share
- Option to Segment
- Facility Assessments
- Enrollment Projections
- <http://ofcc.ohio.gov>

Existing Building Configuration

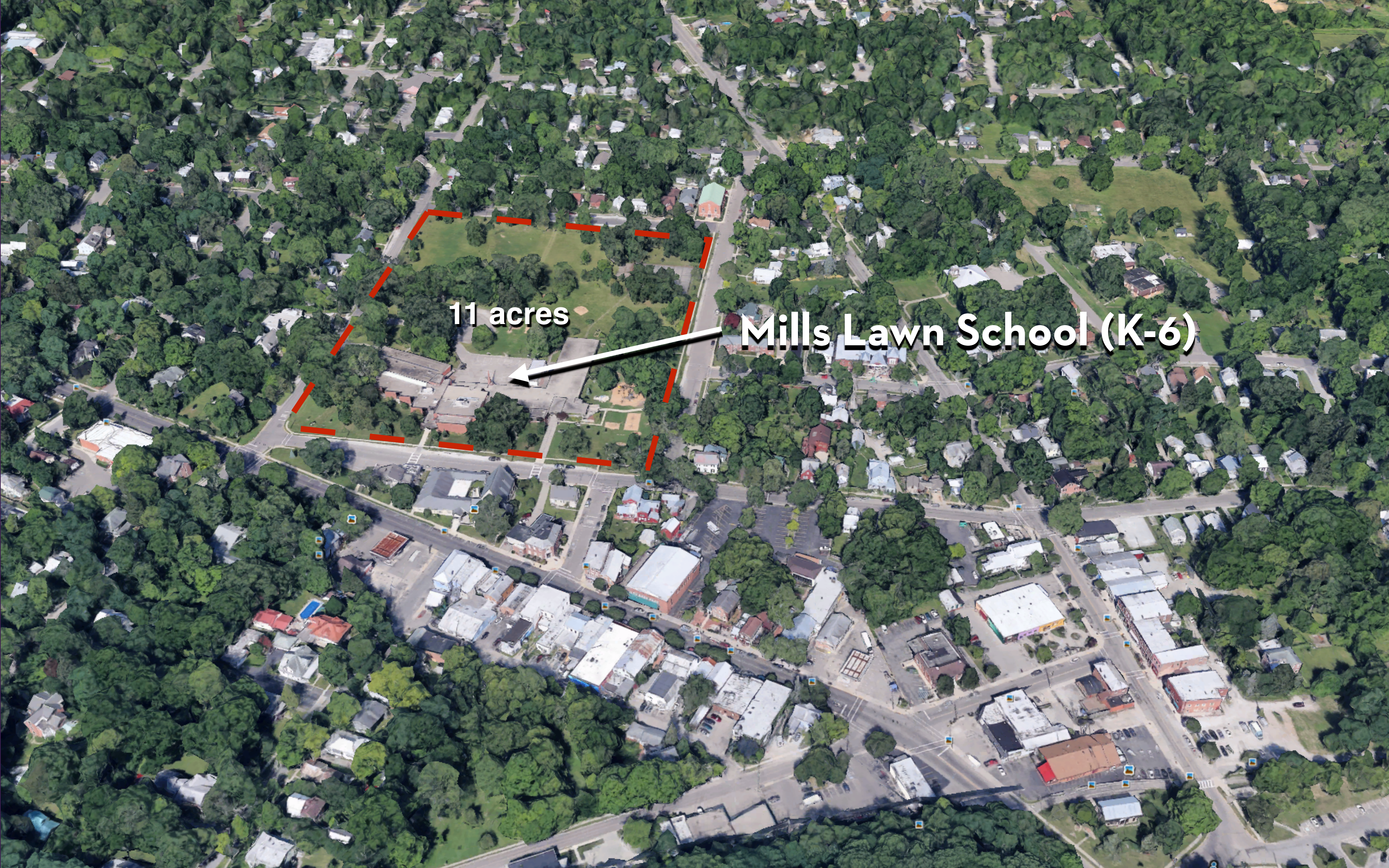


K-6

**Mills Lawn
School**

7-12

**McKinney Middle School
Yellow Springs High School**

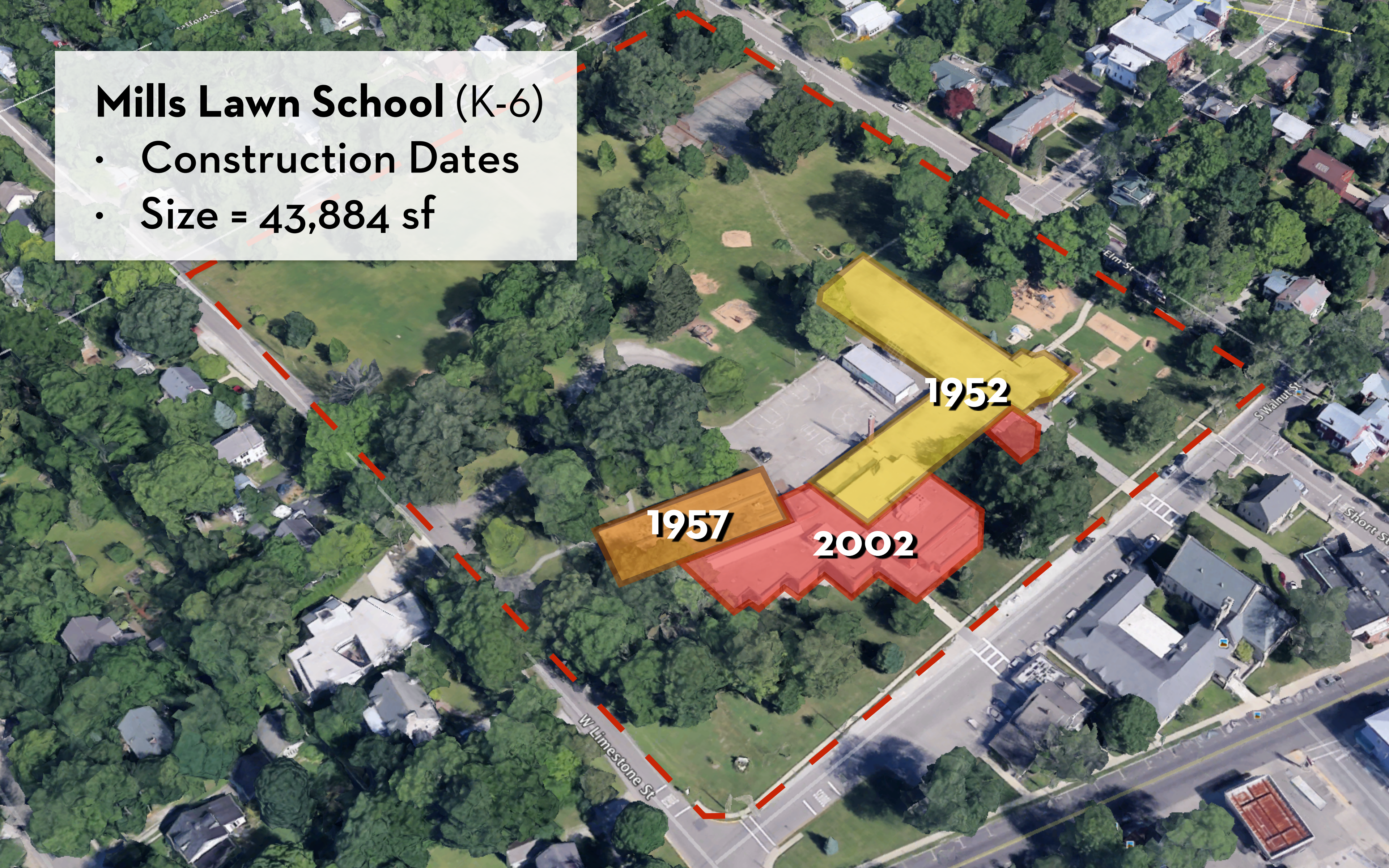


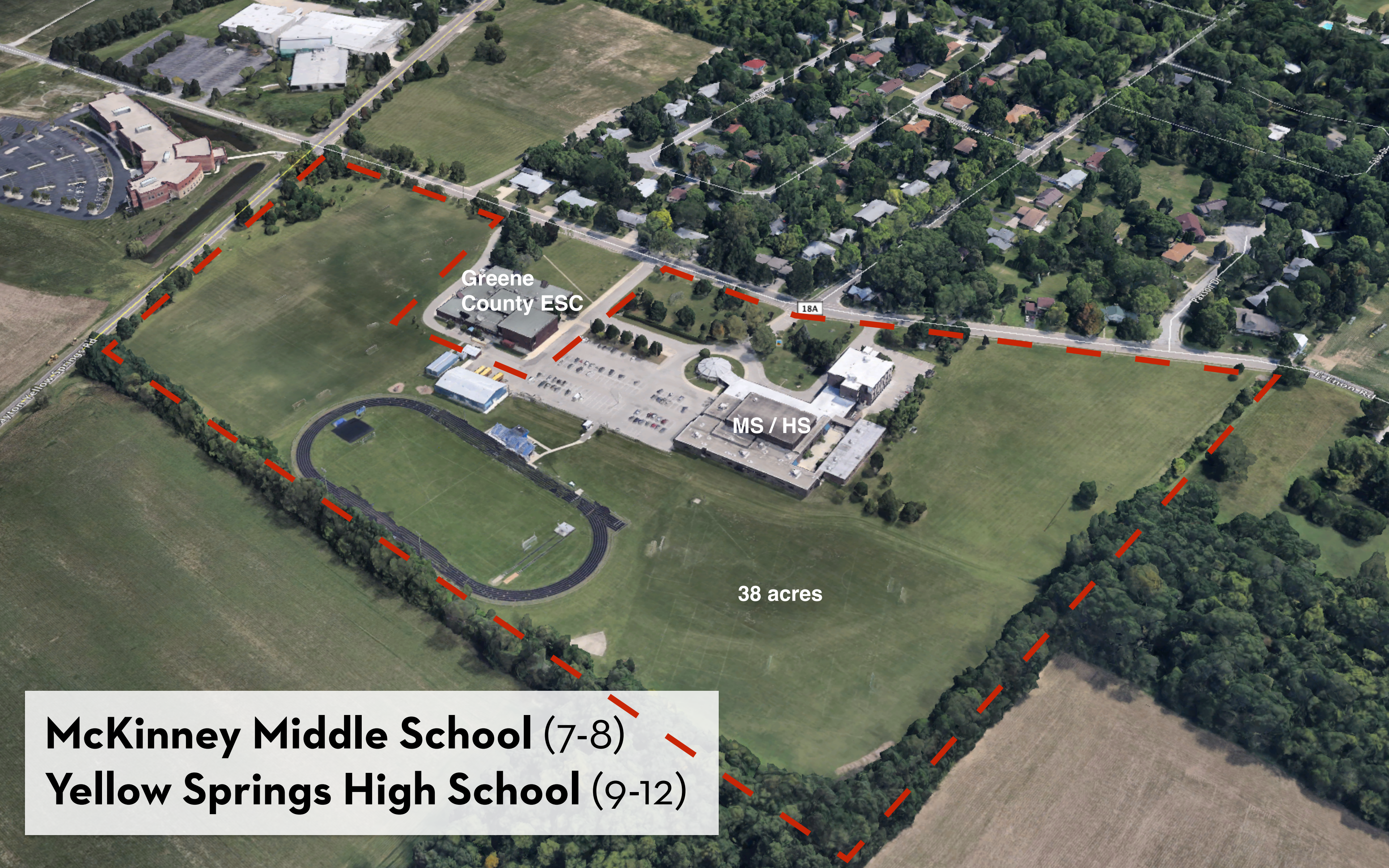
11 acres

Mills Lawn School (K-6)

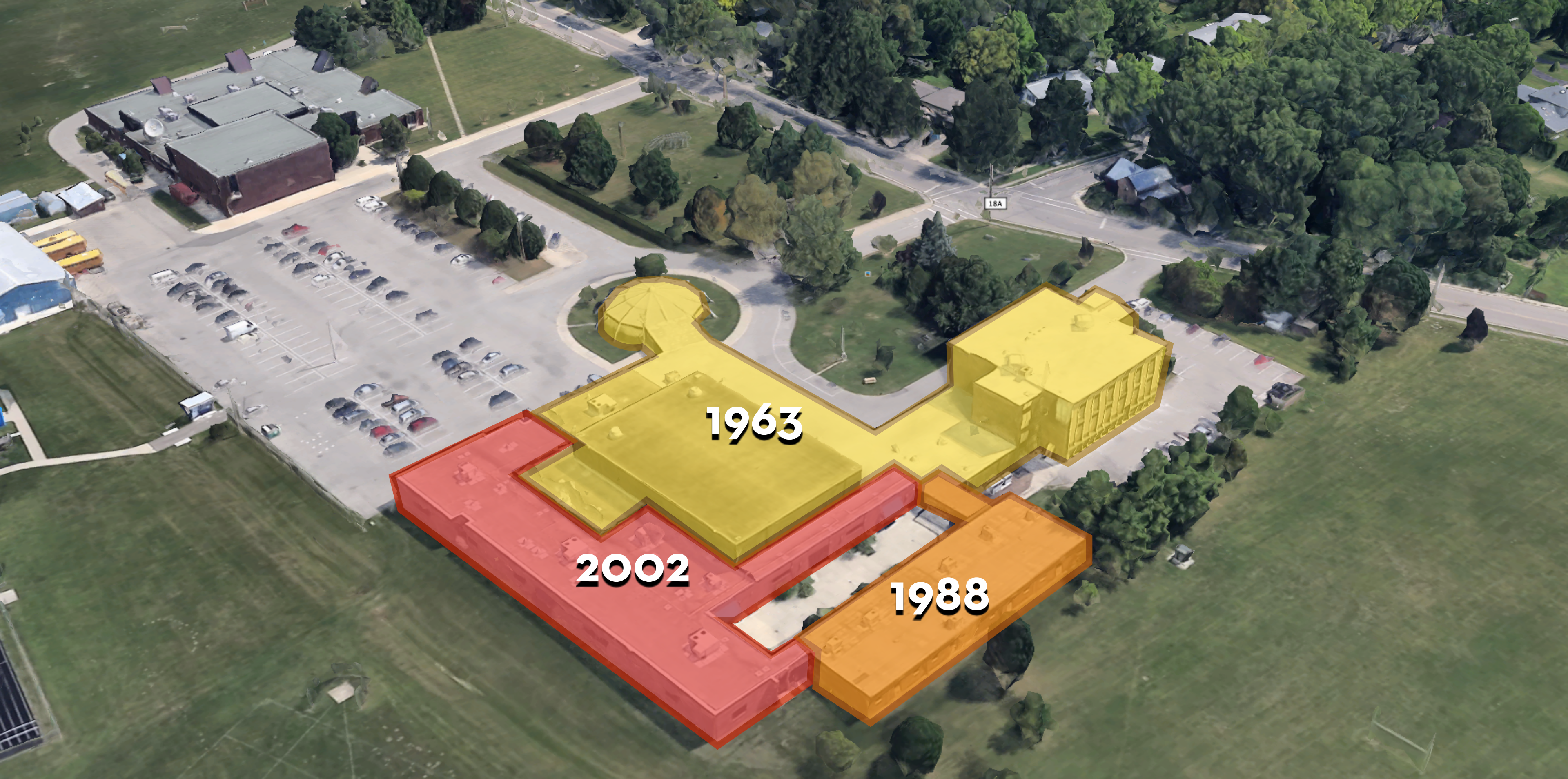
Mills Lawn School (K-6)

- Construction Dates
- Size = 43,884 sf





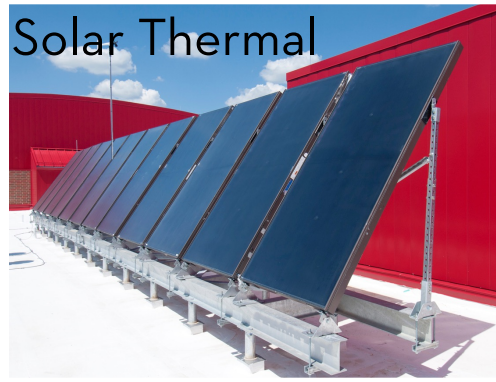
McKinney Middle School (7-8)
Yellow Springs High School (9-12)



McKinney Middle School (7-8)
Yellow Springs High School (9-12)

Size = 56,483 sf

Locally Funded Initiatives



Renewable Energy Initiatives



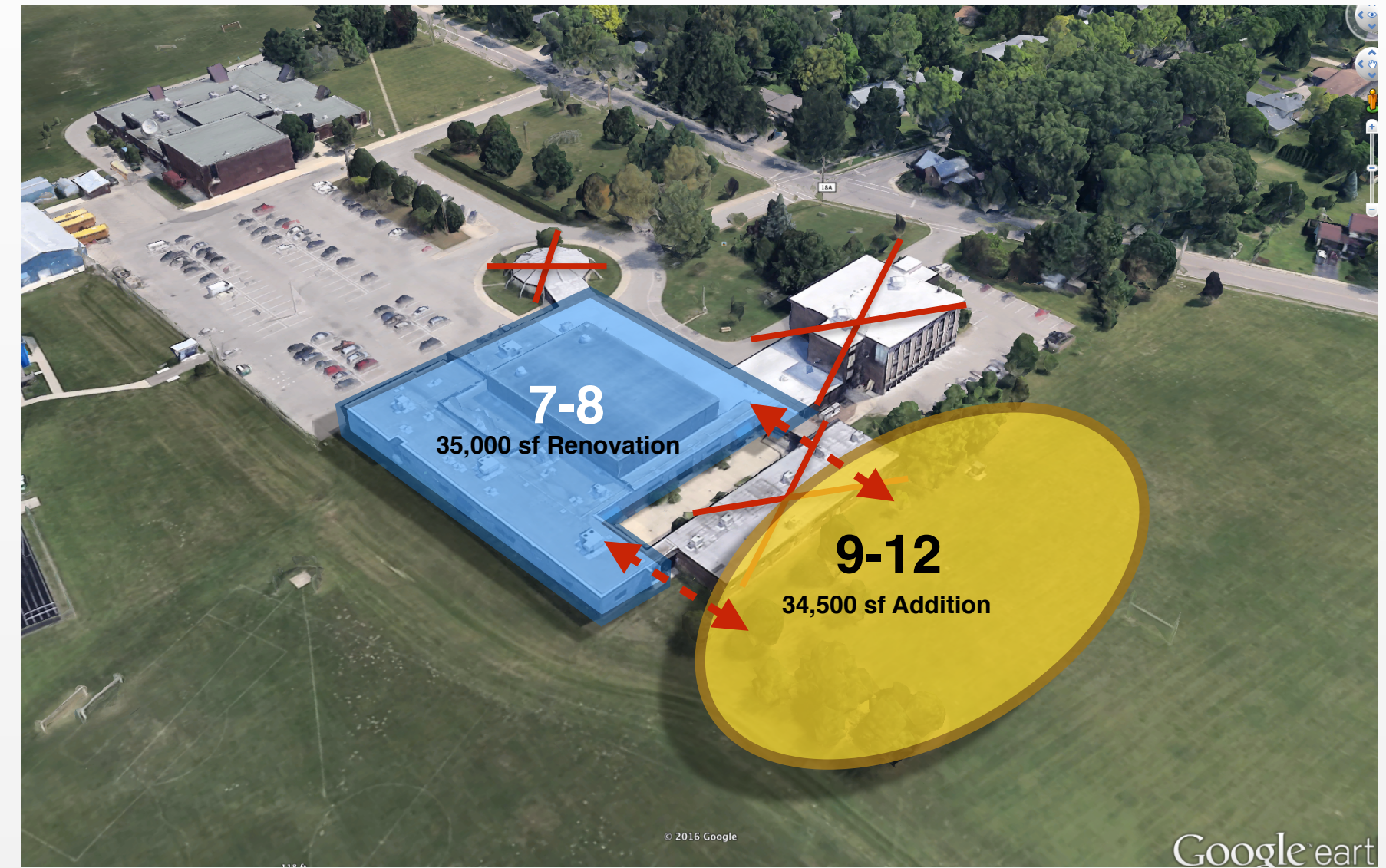
LOCALLY FUNDED INITIATIVES

Facility Master Plan

Concept Master Plan Options



Mills Lawn

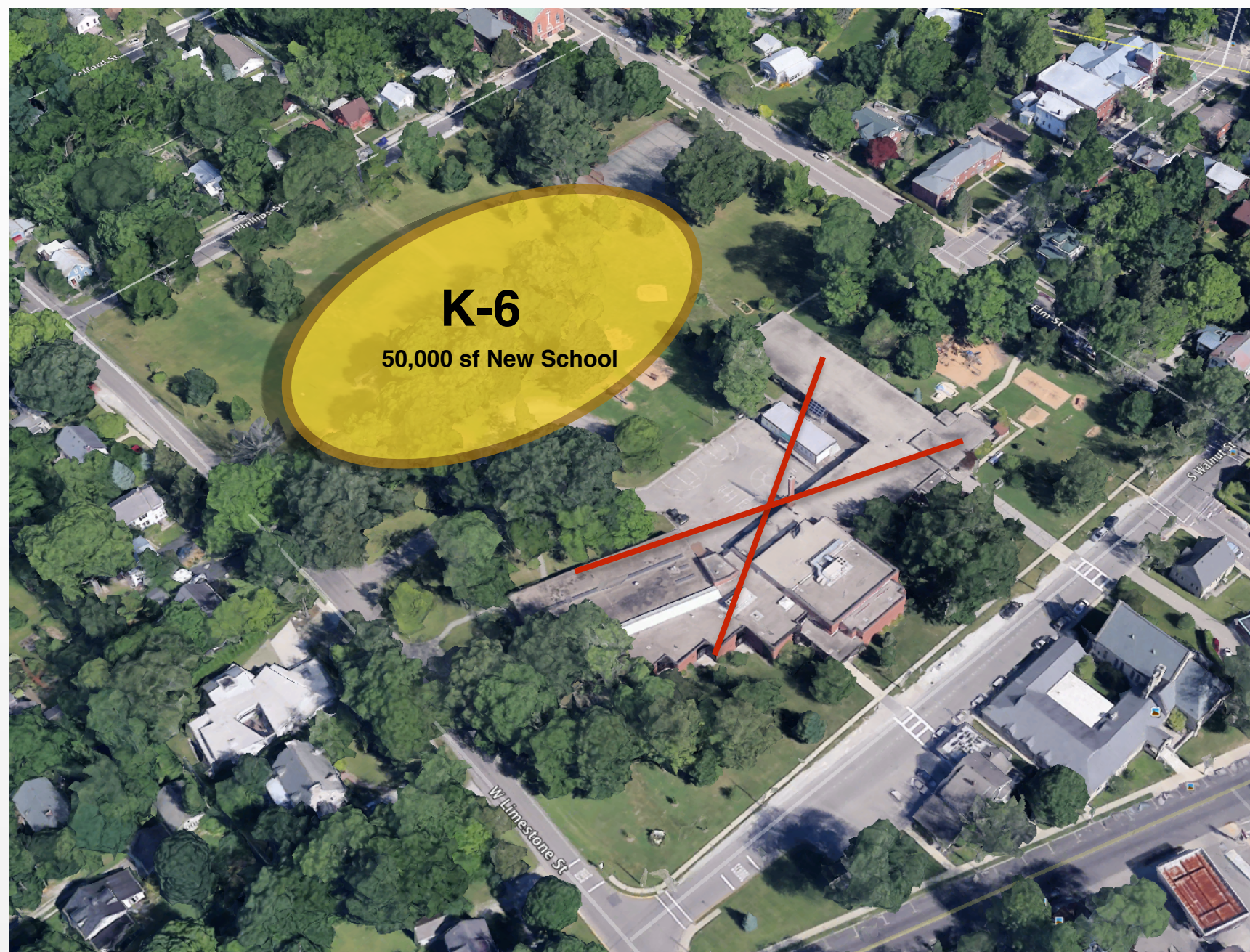


McKinney MS / YSHS

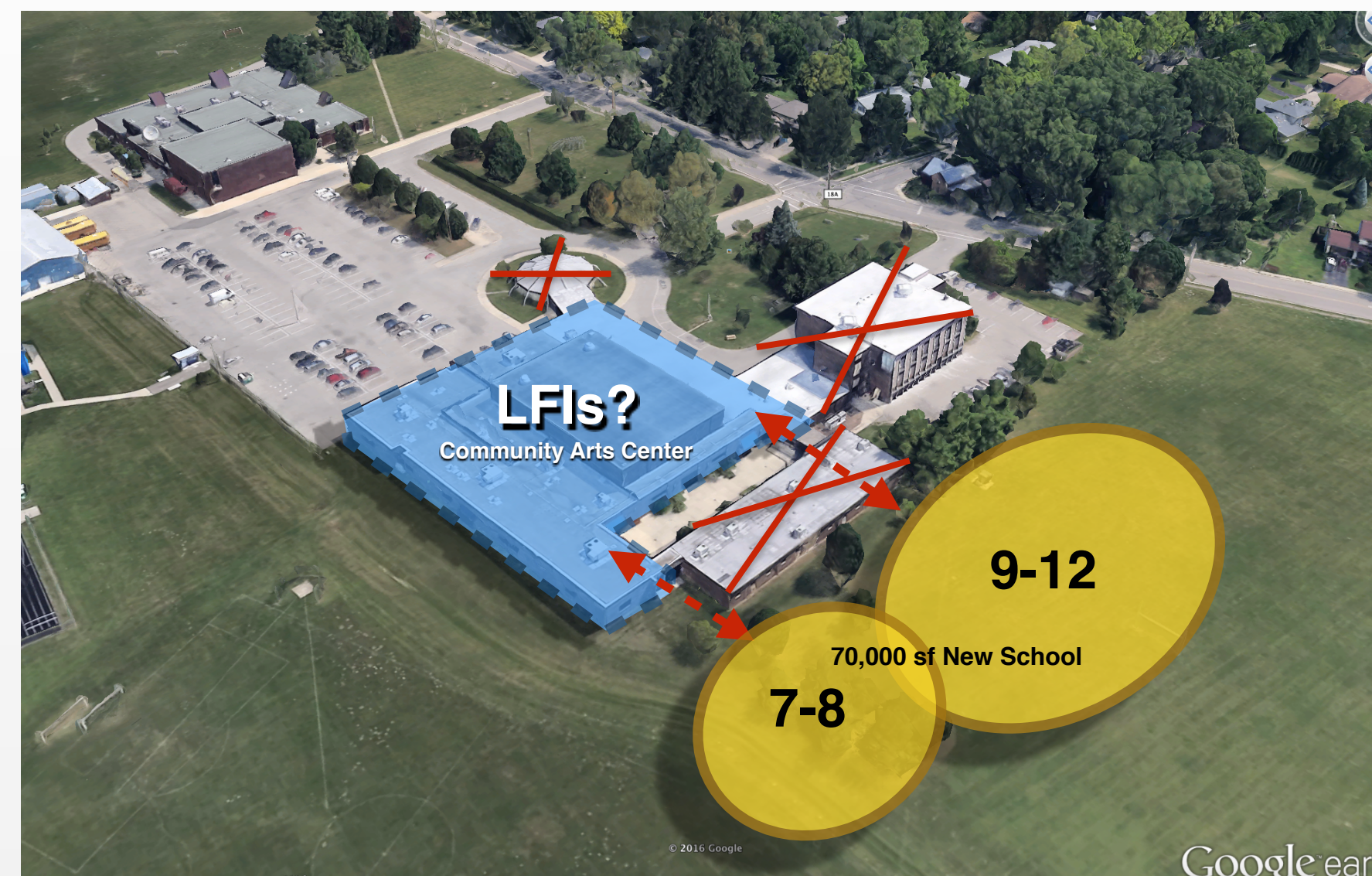
Approx. Budget Segmented Plan = \$16M*
Approx. Budget Full Plan = \$27M*
 *Not including LFI

OPTION A1

Facility Master Plan



Mills Lawn



McKinney MS / YSHS

Approx. Budget Segmented Plan = \$18M*

Approx. Budget Full Plan = \$31M*

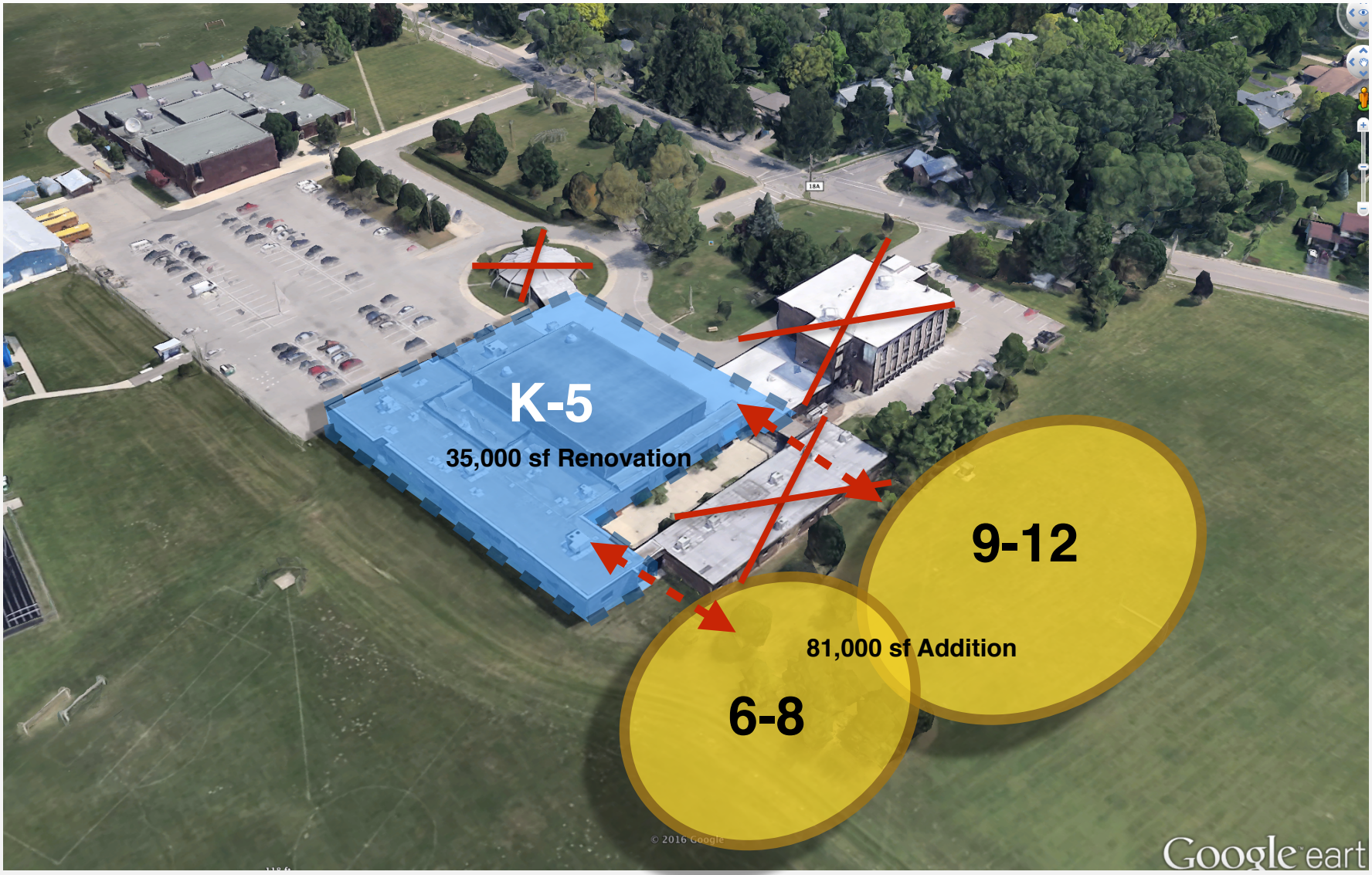
*Not including LFIs

OPTION A2

Facility Master Plan



Mills Lawn Site?



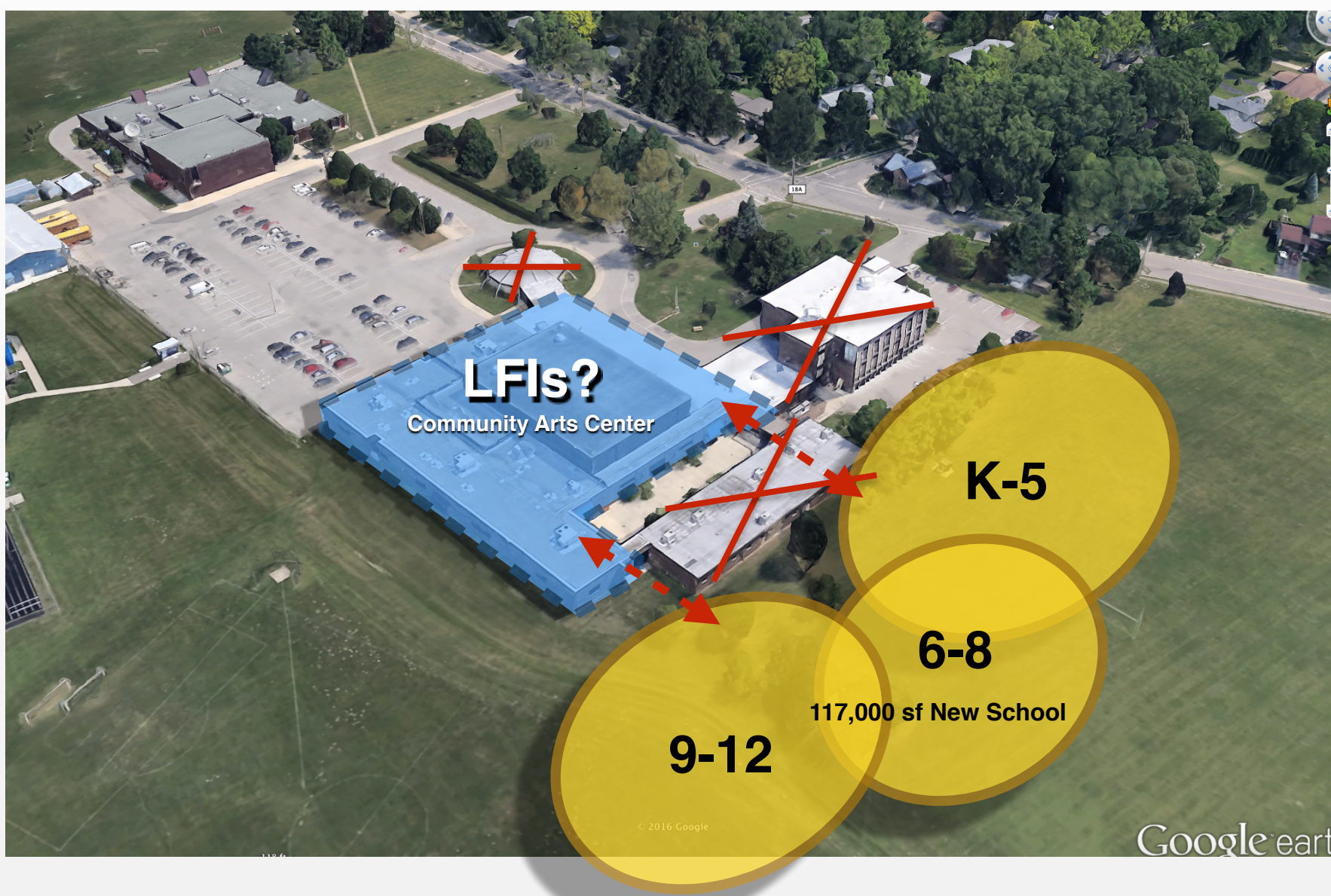
K-12 = ES (K-5), McKinney MS (6-8) / YSHS (9-12)

Approx. Budget Full Plan = \$28M*
 *Not including LFIs

OPTION B1 **Facility Master Plan**



Mills Lawn Site?

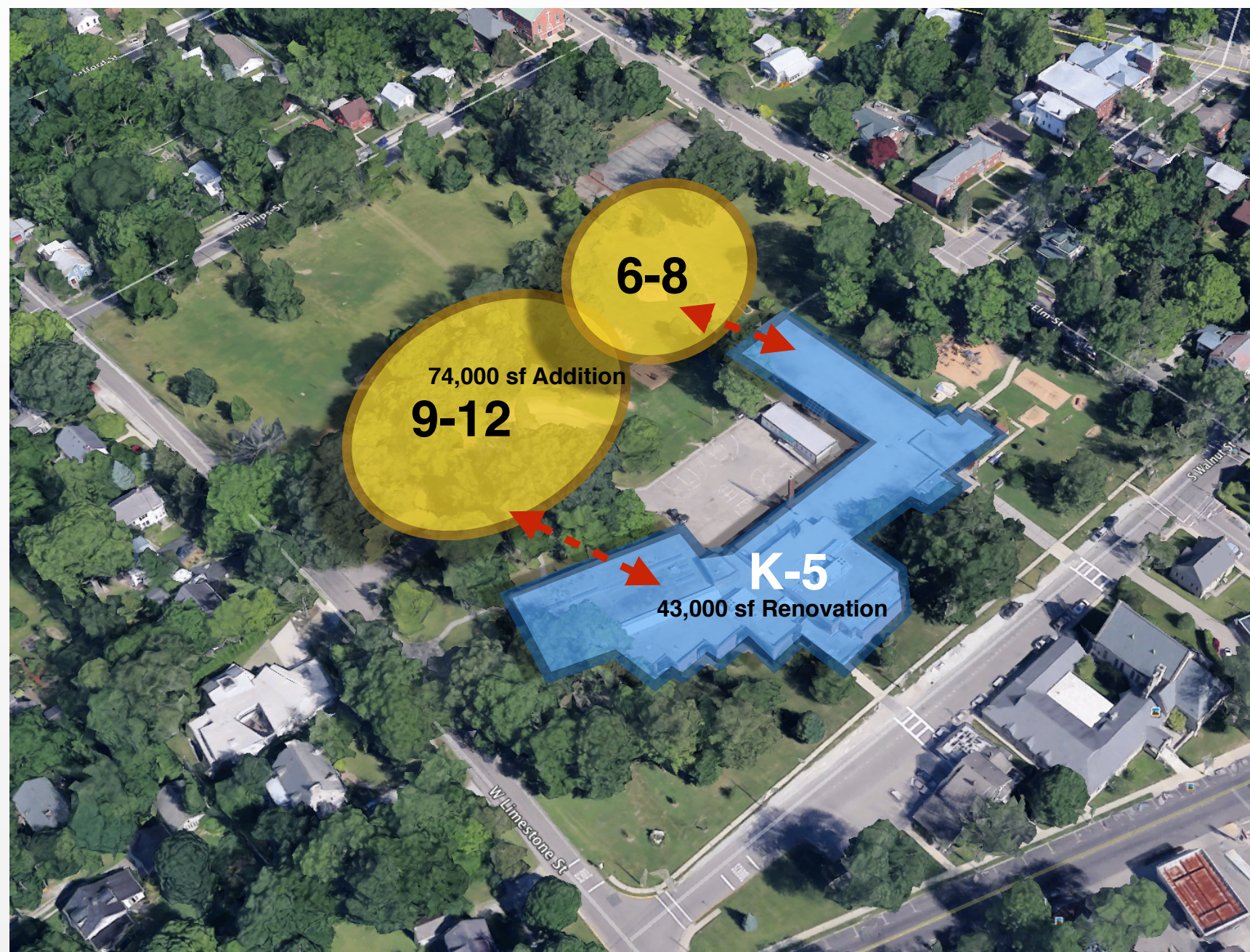


K-12 = ES (K-5), McKinney MS (6-8) / YSHS (9-12)

Approx. Budget Full Plan = \$30M*
 *Not including LFIs

OPTION B2 **Facility Master Plan**





Mills Lawn (K-12)



Middle School / High School Site

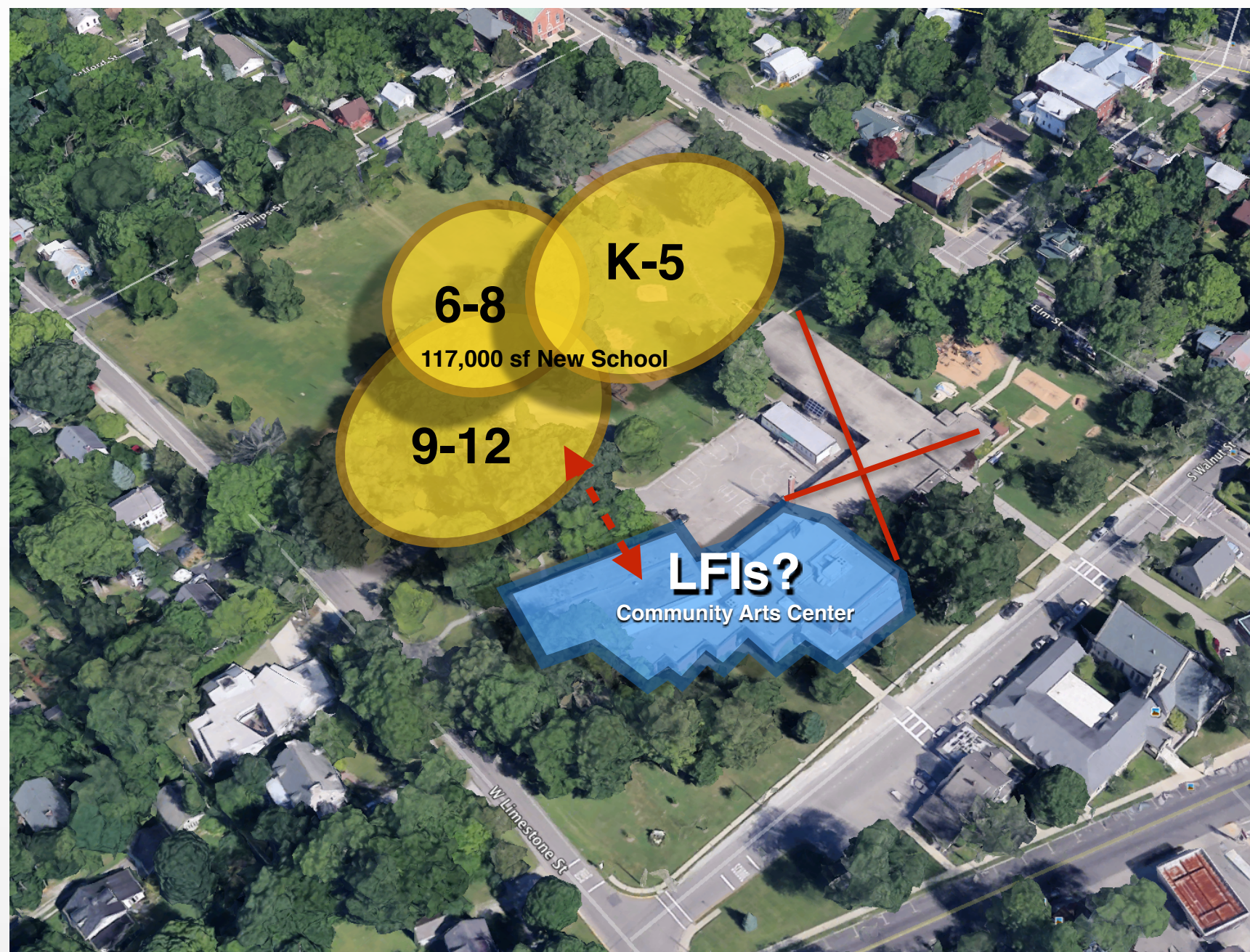
Approx. Budget Segmented Plan = \$19M*

Approx. Budget Full Plan = \$28.5M*

*Not including LFI

OPTION C1

Facility Master Plan



Mills Lawn (K-12)



Middle School / High School Site

Approx. Budget Full Plan = \$30M*
 *Not including LFIs

OPTION C2

Facility Master Plan

BUDGET RANGE

- **Approx. \$16 - \$31M Project Cost***
- **Approx. 6.6 - 12.7 mills***
- **Approx. \$230 - \$445 per year*** per \$100K home value
- **Approx. Credit from State \$3M - \$5M**

*Not including locally funded initiatives
millage based upon 35 year bond, 5% interest
\$131,729,570 District Assessed Valuation

SCHEDULE

- **Planning: now - fall 2017**
- **Board Decision to place on ballot: Dec. 2017**
- **Potential Bond Issue: May 2018**
- **Design: Summer 2018 - Summer 2019**
- **Construction: Summer 2019 - Holiday Break 2020/21**

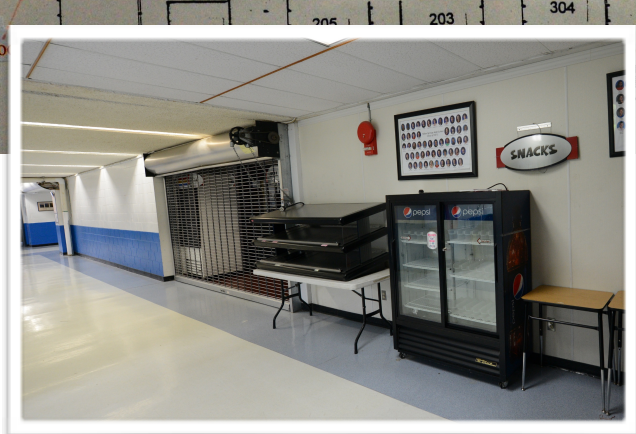
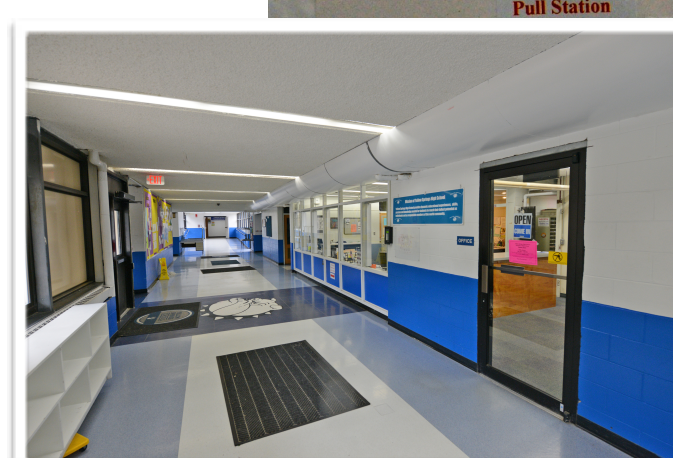
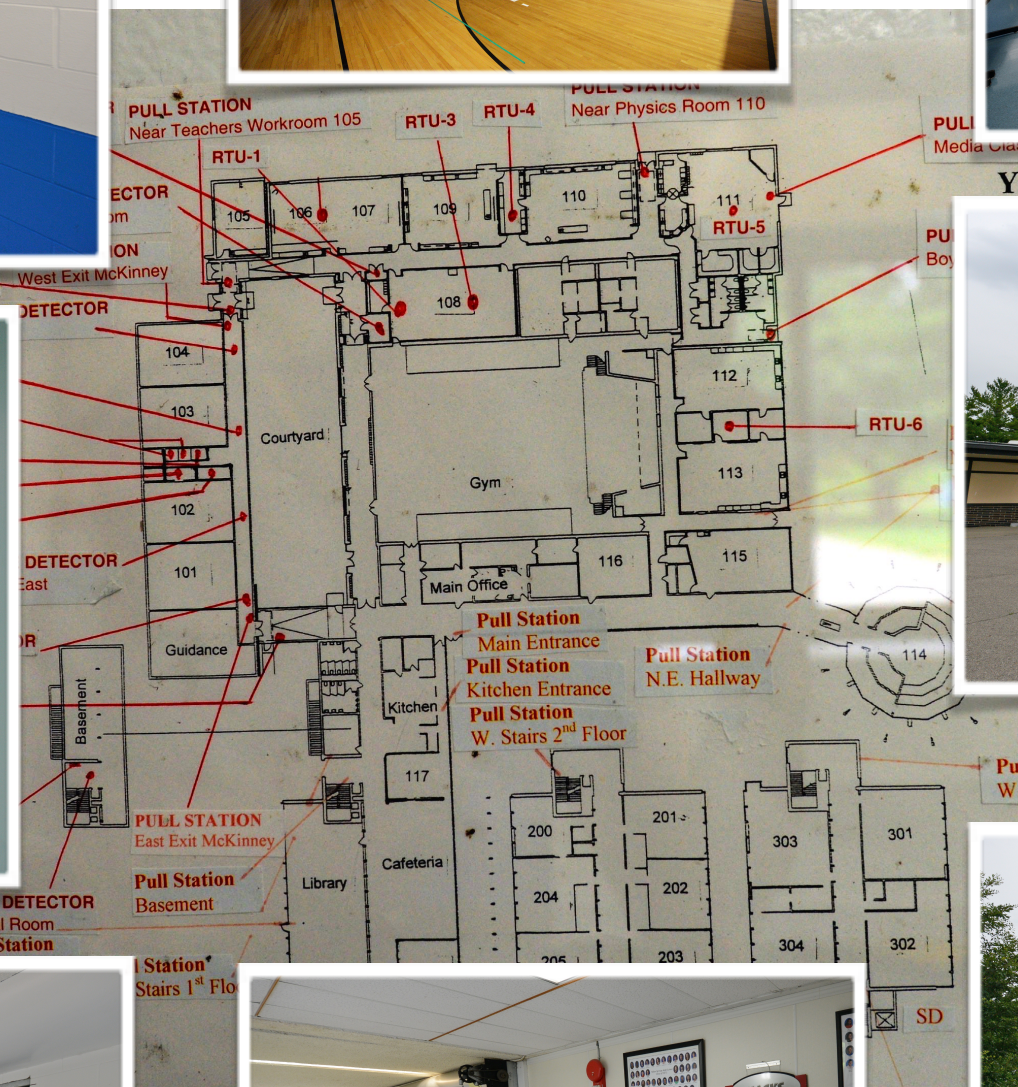
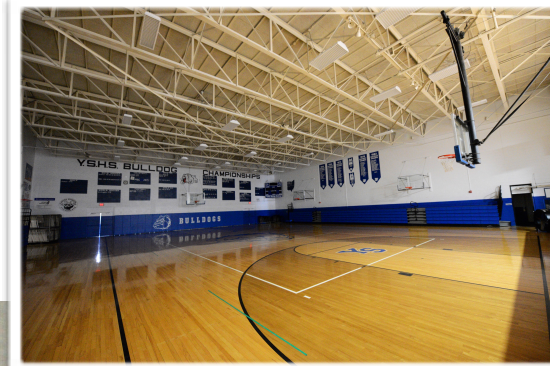
NEXT STEPS

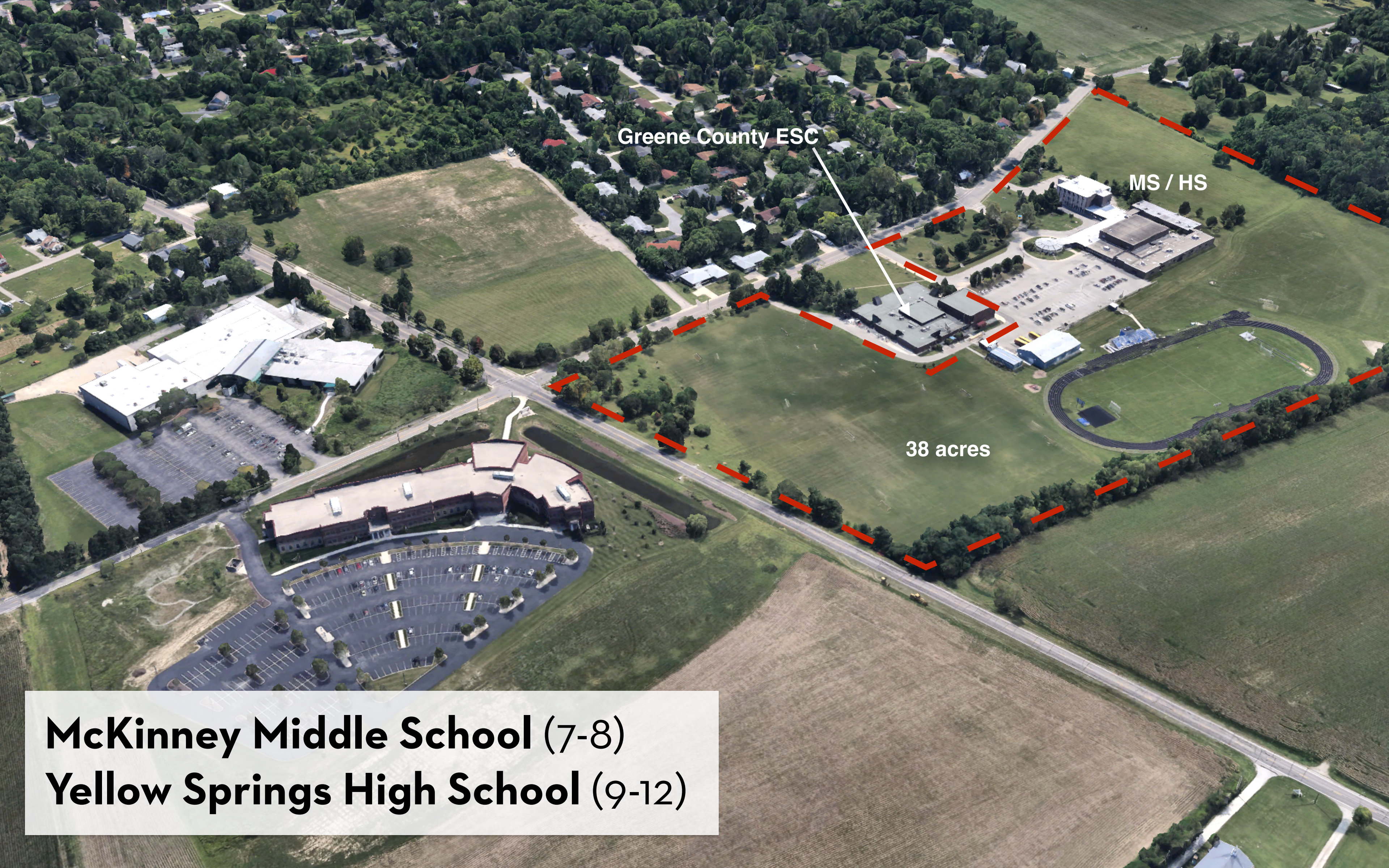
- Future Facility Advisory Committee Meetings
- Future Community Engagement Forums
 - Monday March 27th at YSHS @ 6:30 p.m.
- OFCC Facility Assessments
- Refine Master Plan Options / Costs
- Define Locally Funded Community Initiatives
- Selection of Final Master Plan
- Design Concepts
- Potential Bond Issue May 2018

FACILITIES MASTER PLAN



McKINNEY MS, YELLOW SPRINGS HS





Greene County ESC

MS / HS

38 acres

McKinney Middle School (7-8)
Yellow Springs High School (9-12)