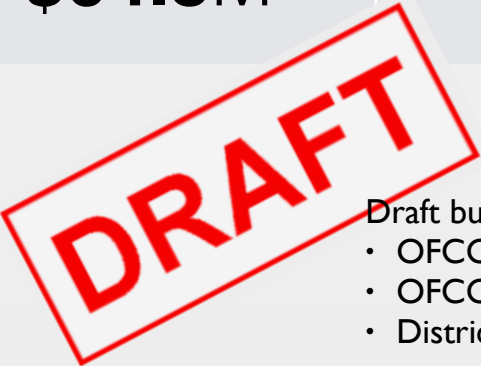


PLAN OPTION	DESCRIPTION	SIZE	BUDGET	FUTURE STATE CREDIT	FUTURE LOCAL SHARE
Option A1	K-6 at Mills Lawn (Reno) 7-12 at MS/HS (Demo, Reno, Add)	124,214 sf	\$36.3M	\$0	\$36.3M
Option A2	K-6 at Mills Lawn (Reno / Add) 7-12 at MS/HS (Demo, Reno, Add)	133,539 sf	\$47.7M	\$0	\$47.7M
Option B1 OFCC ELPP	New K-12 at Enon Rd.	123,452 sf	\$58.1M	\$11.8M	\$46.3M
Option B2 OFCC ELPP	K-12 at MS/HS (Demo, Reno, Add)	123,452 sf	\$54.3M	\$11.1M	\$43.2M
Option C1 OFCC ELPP	K-4 at Mills Lawn (Reno) - LFI New 5-12 at MS/HS	155,064 sf	\$64.1M - \$67.6M	\$9.9M	\$54.3M - \$57.8M
Option C3 OFCC ELPP	K-4 at Mills Lawn (Reno) - LFI 5-12 at MS/HS (Demo, Reno, Add)	155,064 sf	\$60.8M - \$64.3M	\$9.3M	\$51.5M - \$55M



Master Plan Options
Facility Master Plan



Draft budgets to be updated with:

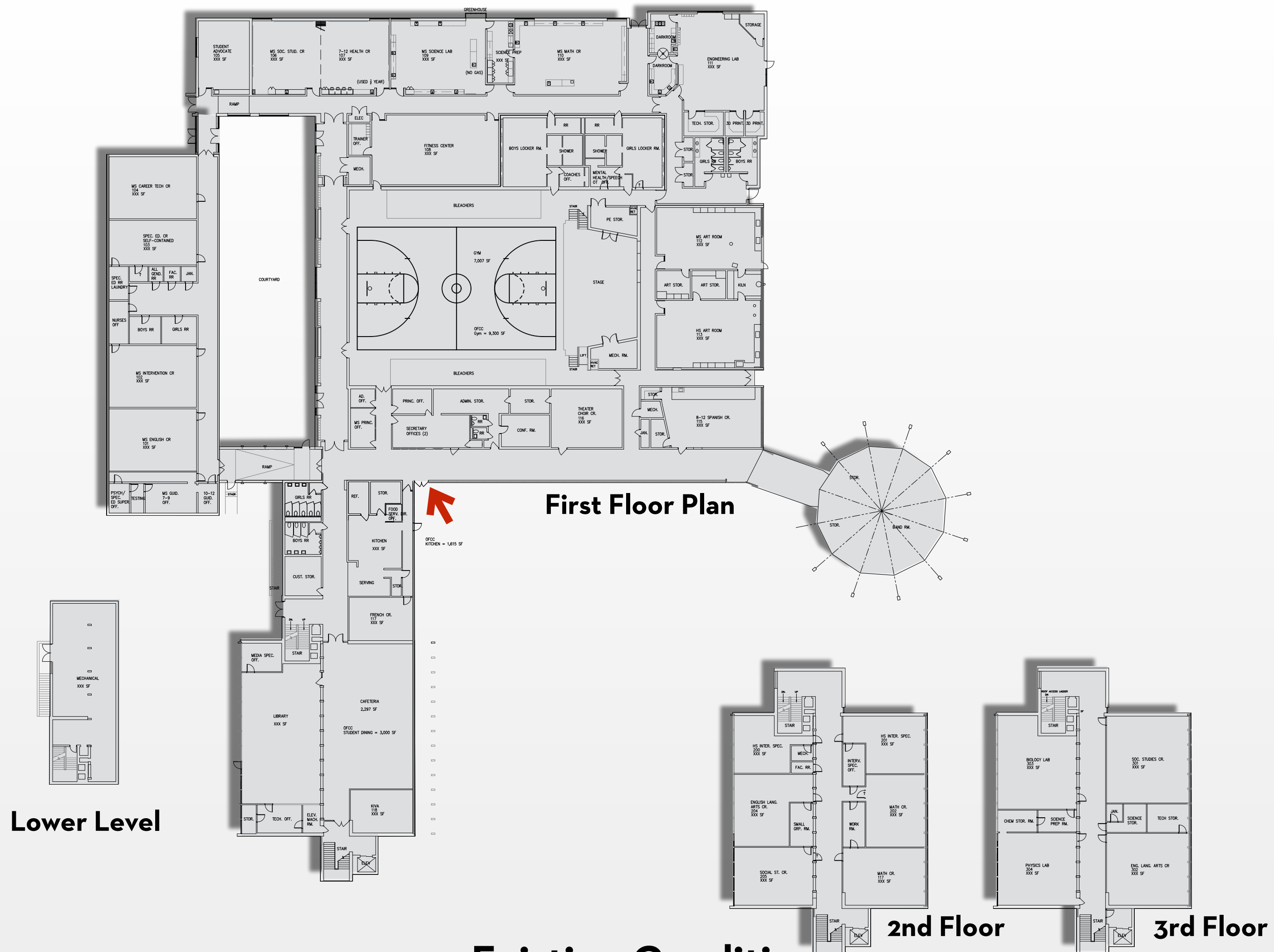
- OFCC 2023 cost set
- OFCC Final Master Plans
- District Approval of Final LFI





Existing Conditions

Mills Lawn Elementary School



Option A1

**K-6 at Mills Lawn (Reno / Add)
7-12 at HS/MS (Demo, Reno, Add)**

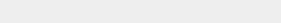
Middle School / High School



March 22, 2023




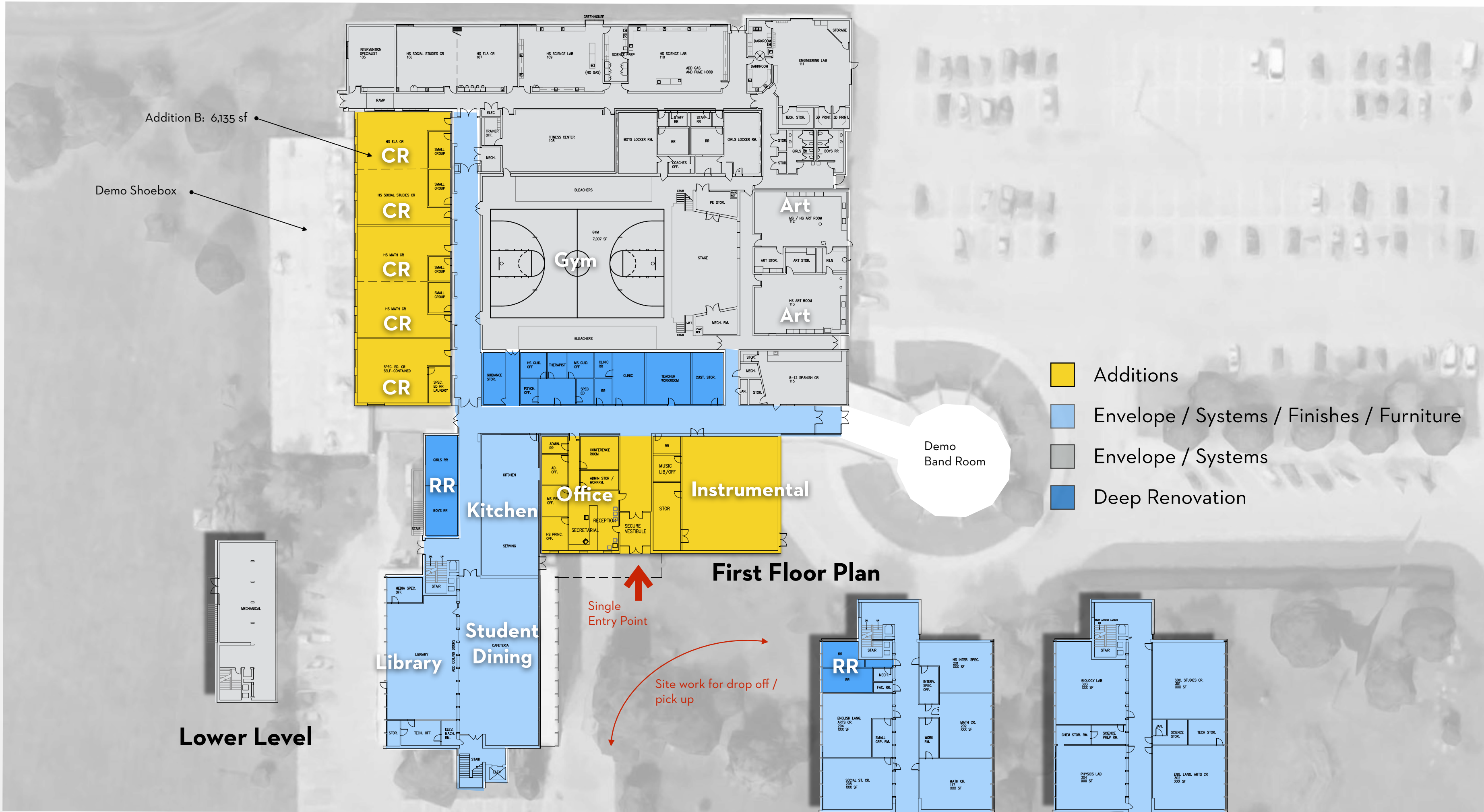




Renovation / Addition Plan (K-6)

Mills Lawn Elementary School





Option A2

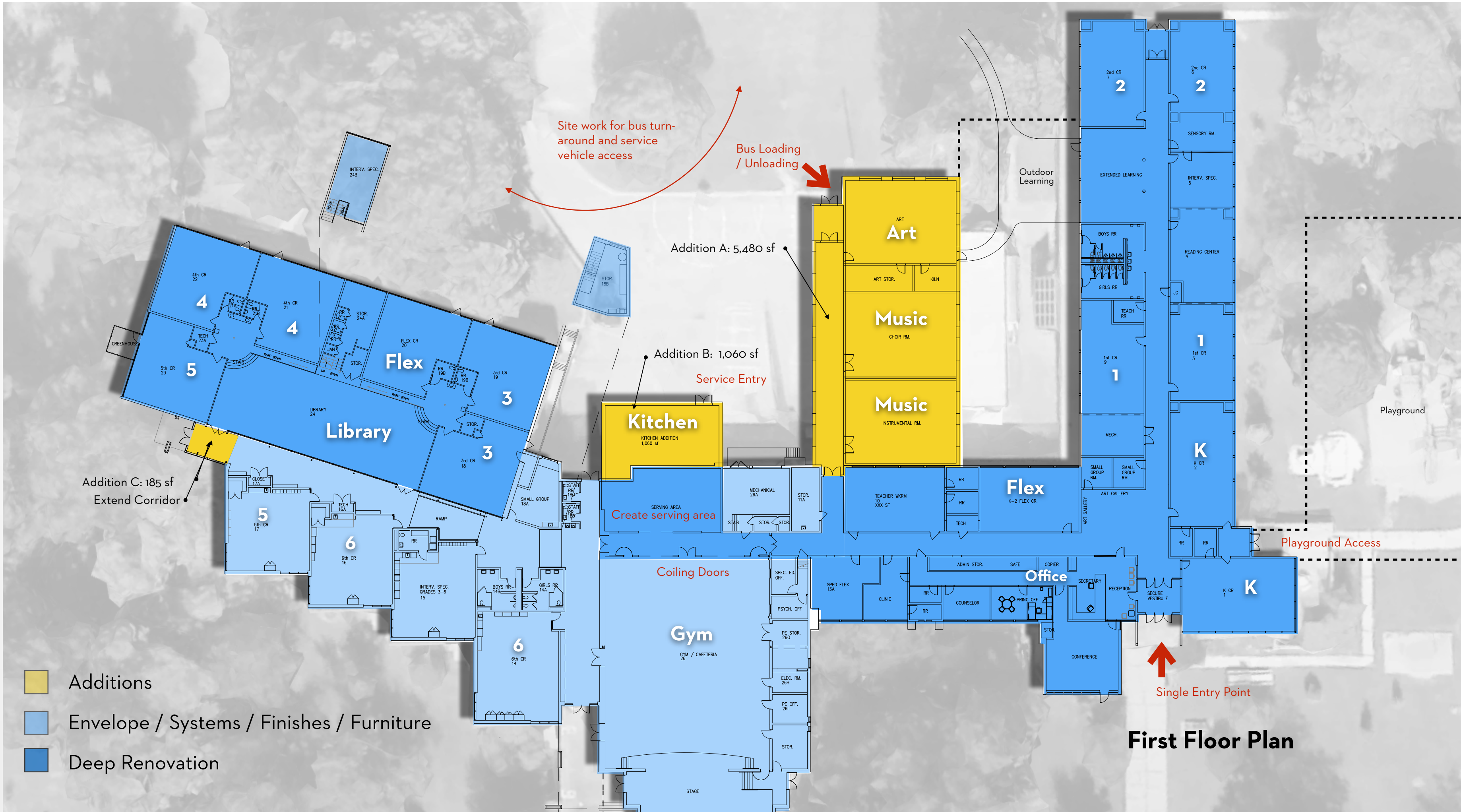
K-6 at Mills Lawn (Reno / Add)
7-12 at HS/MS (Demo, Reno, Add)

Middle School / High School



March 22, 2023





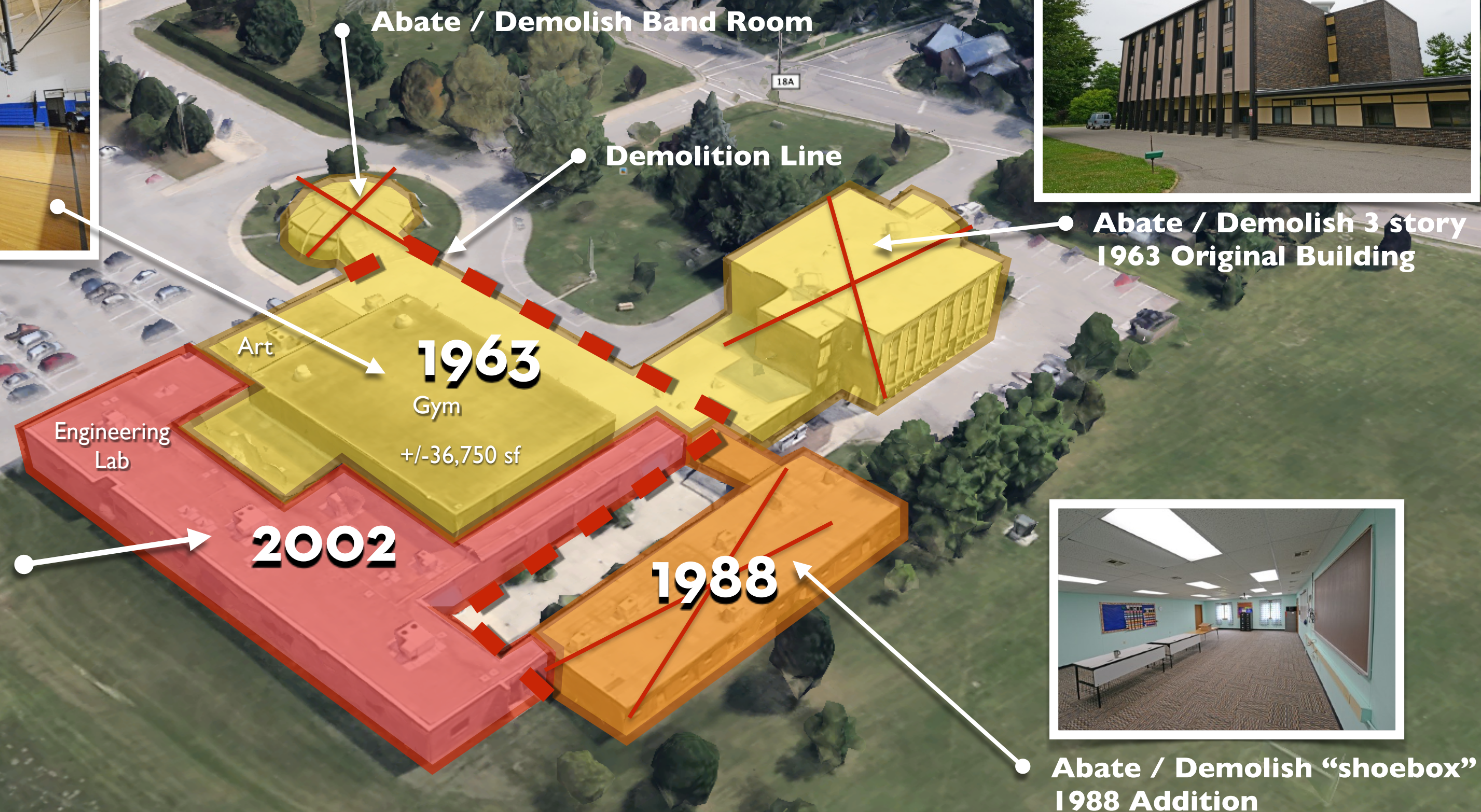
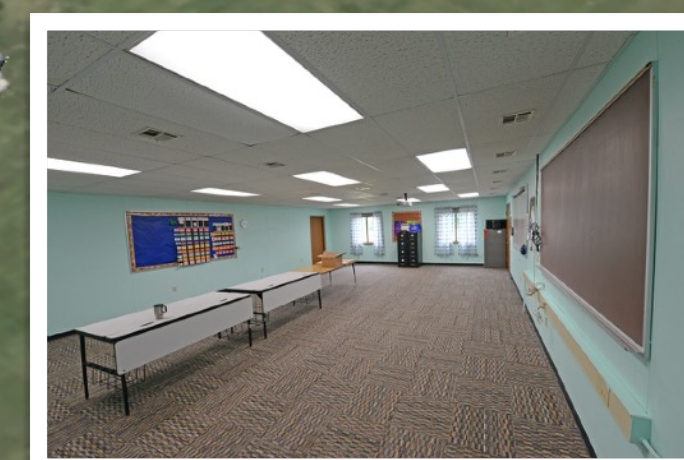
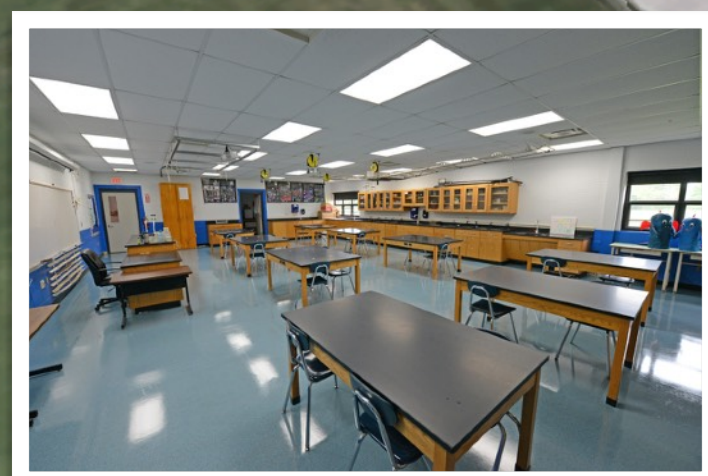
Renovation / Addition Plan (K-6)

Mills Lawn Elementary School



Renovation / Addition Plan (7-12)

Middle School / High School





Existing / Demo Plan

Middle School / High School