

■ YELLOW SPRINGS
FORWARD➤

COMMUNITY
ADVISORY TEAM

Session #3
February 25th, 2021

Agenda

- Welcome / General Update
- Community Forum #1 recap
- Ed Vis preview
- Updated master plan options \$\$
- Sites Conversation
- Additional facility needs



EDUCATIONALLY FANTASTIC



FINANCIALLY APPROPRIATE



COMMUNITY SUPPORTED

Master Planning Timeline



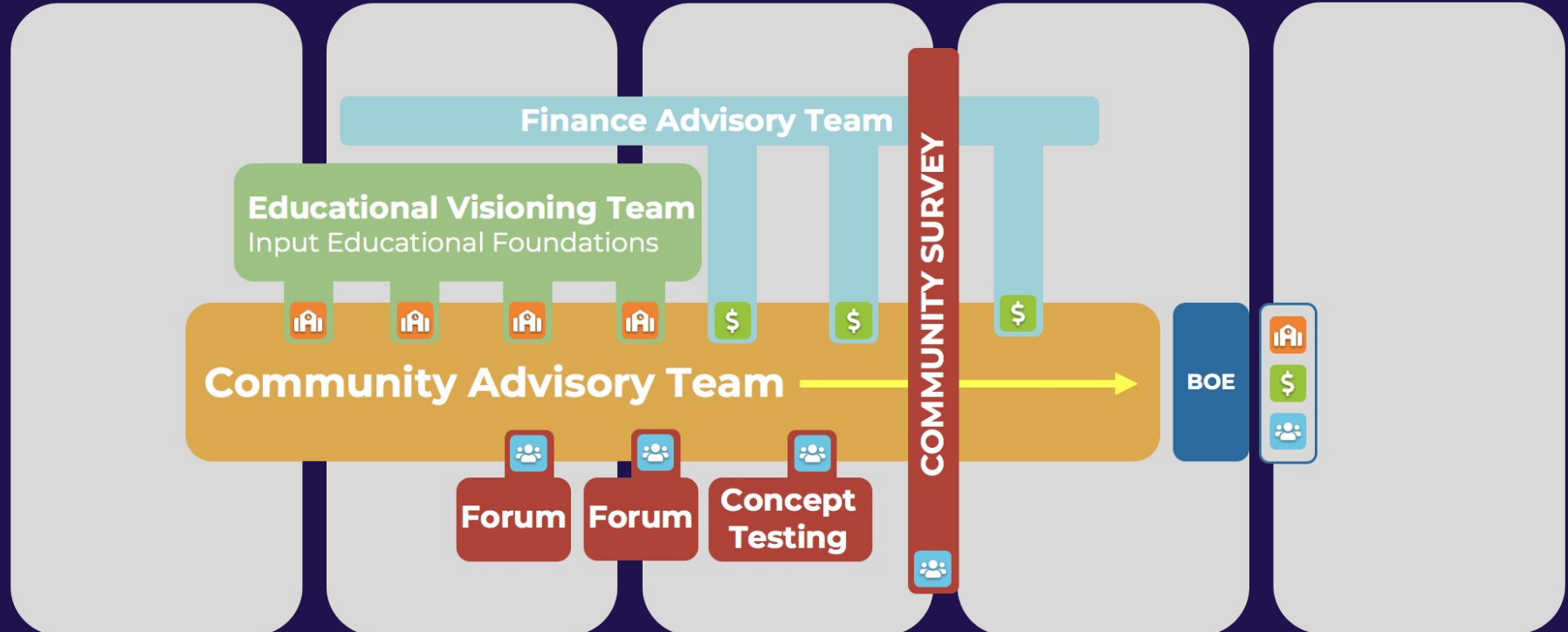
JAN 2021

FEB 2021

MAR 2021

APR 2021

MAY 2021



Recap

COMMUNITY FORUM #1

Preview

Educational Visioning



Learning outdoors



Hands-on/Real life



Focus/Quiet spaces

Updated Cost Sets
Master Plan Options

Option 0 - Renovate all

- Renovate to OFCC standard
- Without OFCC reimbursement
- Without improvements to support Ed Vis
- Without storm shelter
- \$31.7m (all locally funded)

Option 1 - New k12 facility

- built to OFCC standards
- Designed to support Ed Vision
- With storm shelter
- \$35m up front local cost
 - 26% OFCC reimbursement
 - = \$25.9m final local cost

Option 2 - Partial Demo/Reno/Add k12 facility

- built to OFCC standards
- Designed to support Ed Vision
- With storm shelter
- \$33m up front local cost
 - 26% OFCC reimbursement
 - = \$24.5m final local cost

Option 3 - Reno/Add k12 facility

- built to OFCC standards
- Designed to support Ed Vision
- With storm shelter
- \$33.1m up front local cost
 - 26% OFCC reimbursement
 - = \$24.5m final local cost

Jamboard
Master Plan Discussion

10 minutes

Jamboard

Master Plan Discussion

- Links in chat
- Discuss which options will be most:
 - Educationally fantastic
 - Financially appropriate
 - Community supported
- Use stickies to document your discussion

Option 0 - Renovate all

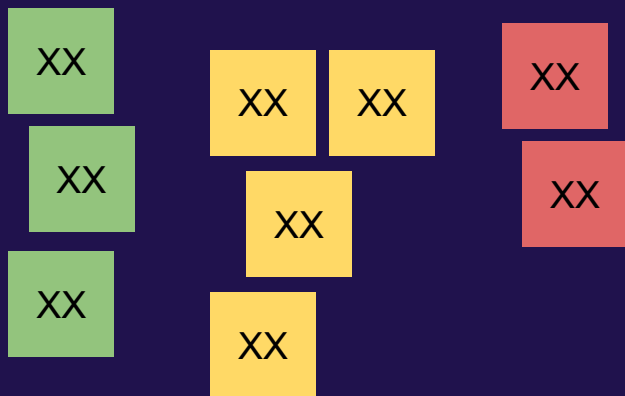
- Renovate to OFCC standard
- Without OFCC reimbursement
- Without improvements to support Ed Vis
- Without storm shelter
- \$31.7m (all locally funded)

Option 1 - New k12 facility

- built to OFCC standards
- Designed to support Ed Vision
- With storm shelter
- \$35m up front local cost
 - 26% OFCC reimbursement
 - = \$25.9m final local cost

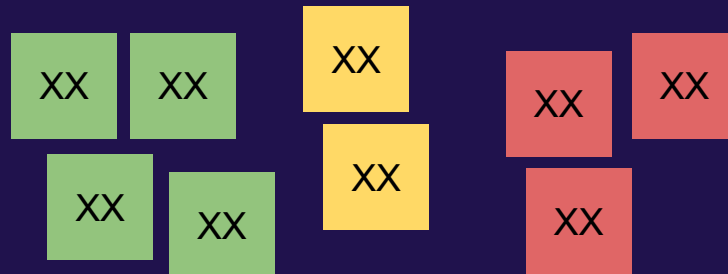
Option 2 - Partial Demo/Reno/Add k12 facility

- built to OFCC standards
- Designed to support Ed Vision
- With storm shelter
- \$33m up front local cost
 - 26% OFCC reimbursement
 - = \$24.5m final local cost



Option 3 - Reno/Add k12 facility

- built to OFCC standards
- Designed to support Ed Vision
- With storm shelter
- \$33.1m up front local cost
 - 26% OFCC reimbursement
 - = \$24.5m final local cost



Ranking **Master Plan Options**

Poll

Master Plan Options

Option 0 - Renovate all

- Renovate to OFCC standard
- Without OFCC reimbursement
- Without improvements to support Ed Vis
- Without storm shelter
- \$31.7m (all locally funded)

Option 2 - Partial Demo/Reno/Add k12 facility

- built to OFCC standards
- Designed to support Ed Vision
- With storm shelter
- \$33m up front local cost
 - 26% OFCC reimbursement
 - = \$24.5m final local cost

Option 1 - New k12 facility

- built to OFCC standards
- Designed to support Ed Vision
- With storm shelter
- \$35m up front local cost
 - 26% OFCC reimbursement
 - = \$25.9m final local cost

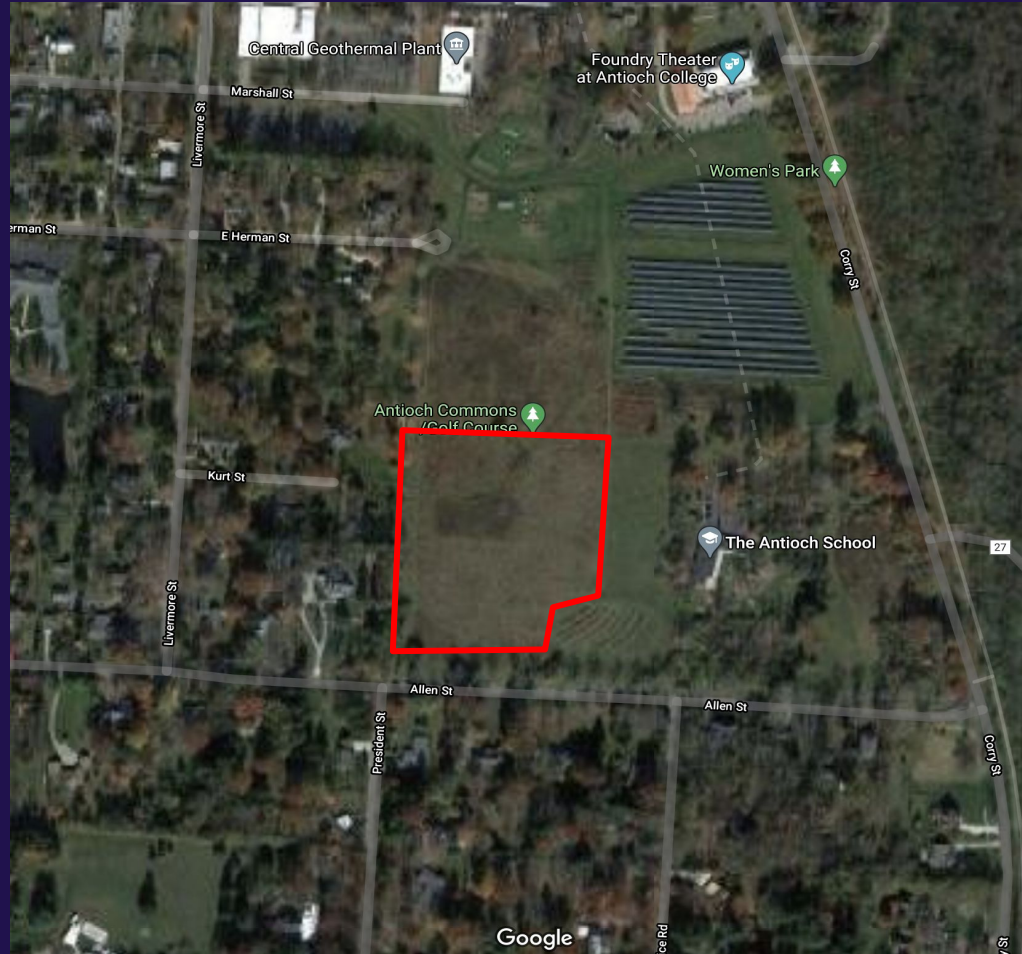
Option 3 - Reno/Add k12 facility

- built to OFCC standards
- Designed to support Ed Vision
- With storm shelter
- \$33.1m up front local cost
 - 26% OFCC reimbursement
 - = \$24.5m final local cost

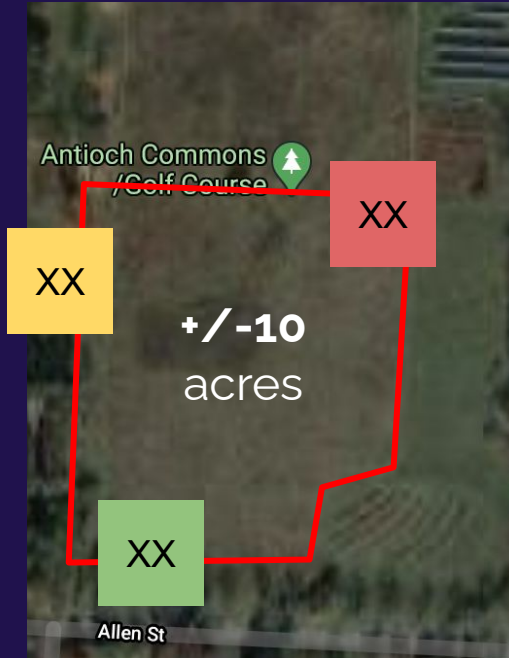
Option 1 - New k12
Site selection

5 minutes





+/-10
acres



Best community supported use of vacated site/s?



Option 1 - New k12 **Site selection**

Poll
Site selection



THANK YOU!

See you next time

- Community Forum #2 - Mar 4th
- Community Advisory Team #4 - Mar 10th